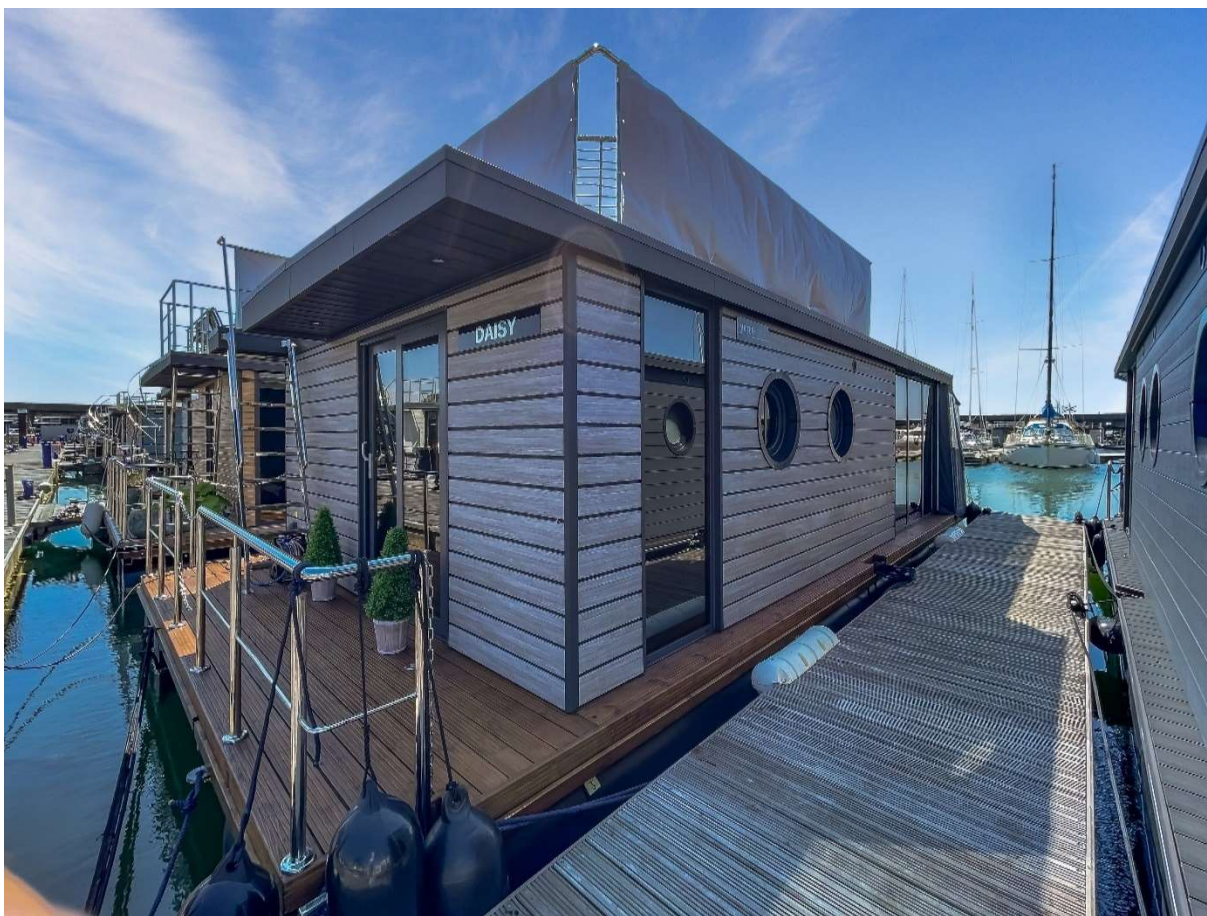




## **2022 WATERLODGE Oasis 5**

**“DAISY”**

**£195,000**



<b>Overall Length</b>	<b>12.0m</b>
<b>Width</b>	<b>5.0m</b>
<b>Internal Floor Area</b>	<b>38m<sup>2</sup></b>
<b>Roof Terrace Area</b>	<b>20m<sup>2</sup></b>

"Daisy," a 2022 Waterlodge Oasis Five, presents an excellent opportunity for those seeking a luxurious waterfront lifestyle. At just 2 years old and previously serving as a demonstrator Waterlodge, she remains in immaculate condition.

Daisy boasts desirable features such as a roof terrace with a teak-effect deck, perfect for soaking in the sun and enjoying breathtaking views, as well as marine canvas coverings.

Purchasing "Daisy" now offers a unique chance to acquire a premium waterfront property at a discount compared to the cost of a new 2024 Waterlodge Oasis Five build.

Additionally, "Daisy" comes with 7 months of mooring left at Brighton Marina. She can be transported to an alternative destination, and Waterlodge UK can provide a quote to move her to a new marina or location.

Don't miss out on this opportunity to own "Daisy" and indulge in the ultimate Waterlife experience.

Contact us today for further details and to arrange a viewing.

## **CONSTRUCTION**

Galvanised Pontoon frame

Polyethylene box floats with internal waste and water tanks

External CLAYSTONE cladding

Electric central heating/hot water system

## **ACCOMMODATION**

Two bedroom layout with one bathroom and fitted kitchen.

## **MASTER BEDROOM**

Master bedroom with Ottoman double bed and wardrobe

Upgraded fitted wall mounted reading lights

Additional floor to ceiling window.

Sliding patio door to rear deck

## **BATHROOM**

Toilet

White vanity unit with sink

Sliding shower door enclosure

Bathroom towel rail

## **SECOND BEDROOM**

Ottoman double bed and wardrobe

Upgraded fitted wall mounted reading lights

Additional floor to ceiling window

## **KITCHEN**

VOXTORP white units without handles

SALJAN BLACK MINERAL worktops

VALBILDAD electric 2 burner induction hob

Microwave with combi oven built in

Undercounter Integrated dishwasher

Undercounter integrated fridge

Breakfast Bar with overhead light

## **LOUNGE**

VOX RIGIO Cement stone flooring upgrade

Sliding patio doors to decking area

6 full height windows

Curtains for patio windows in Grey

Blinds for side windows in lounge and bedroom

Blinds for porthole windows upgrade

## **ROOF TERRACE**

Straight staircase leading to upper deck roof terrace

Teak-Effect roof terrace deck in Grey

## Optional extras as fitted

Roof terrace

Teak-effect roof terrace deck

Sliding patio door to rear deck

Infa-red underfloor heating

Additional Bedroom Windows

2 x additional floor 240v sockets in front corners of lounge

TV Socket with aerial cable to roof

Double USB socket

Bedroom reading lights per bedroom

Built in Combi microwave/grill

Dishwasher

400 Litre storage box under forward deck

Bedroom Furniture pack – 2 x Double bed & 2 x Wardrobe

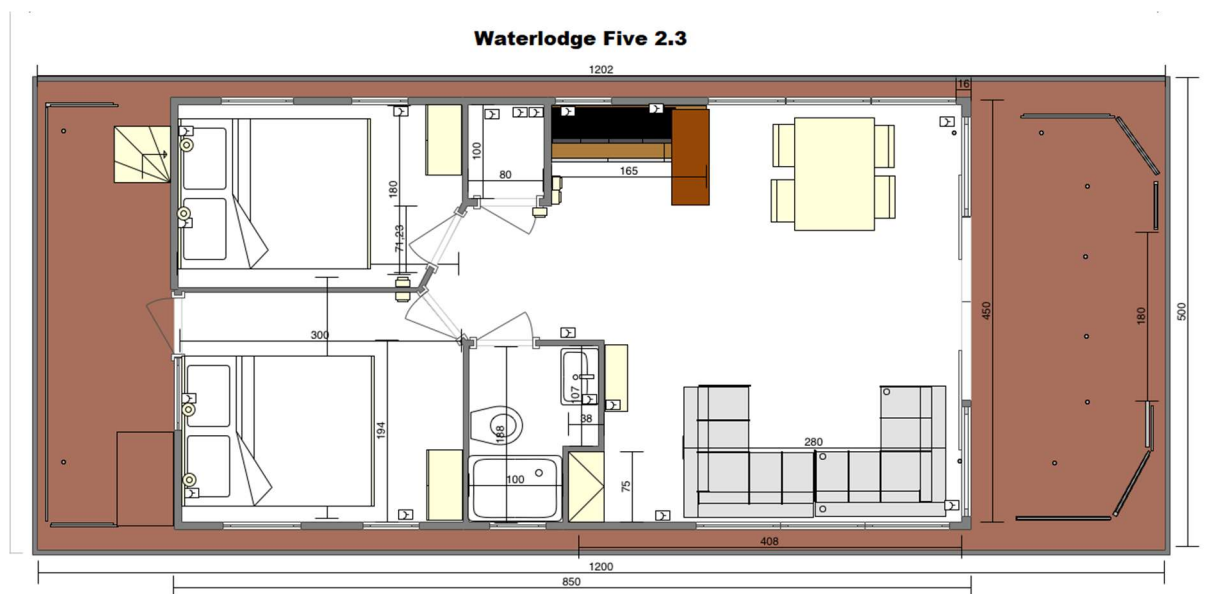
Curtains for patio doors in grey

Blinds for side windows in lounge and bedroom

Blinds for porthole windows

**TOTAL ASKING PRICE**

**£195,000**



















**Contact info**

**Middle Barn, Efford Park, Milford Rd, Lymington, Hampshire SO41 0JD**

**01590 630655**

**[info@waterlodge.co.uk](mailto:info@waterlodge.co.uk)**

**[www.waterlodge.co.uk](http://www.waterlodge.co.uk)**